

# PLASTIC FORMWORK SHEET


Replaces The Need for Form Ply



PLASTIC FORMWORK

 [info@plasticconcreteformwork.com](mailto:info@plasticconcreteformwork.com)

 [www.plasticconcreteformwork.com](http://www.plasticconcreteformwork.com)

 0498 202 445

Plastic formwork is the future of the formwork industry. As an industry leading plastic formwork supplier, we specialise in providing the best quality formwork sheets to replace form plywood. Our plastic formwork for concrete is a low maintenance, cost-effective, and environment-friendly alternative to the other formwork timber products. With competition in the business getting tighter and more advanced by the day, the need for newer and more plastic formwork systems is crucial.



Sold

4.8+

Million Sheets Globally

Sold in

68+

Countries

Average

50+

Uses Per Sheet

With Over


85+

Happy Customers



 [info@plasticconcreteformwork.com](mailto:info@plasticconcreteformwork.com)

 [www.plasticconcreteformwork.com](http://www.plasticconcreteformwork.com)

 0498 202 445

# What is Plastic Formwork?





Plastic formwork systems have created a buzz in the construction industry since it was introduced. The numerous advantages it offers in terms of flexibility, cost-savings, and quick turnaround makes plastic formwork a valuable asset. Plastic Formwork will almost completely replaced the traditional wood and steel formwork in many construction markets. It can be reused up to 100 times.

The cost of buying enough timber for 100 uses is enough for businesses to make the switch to plastic formwork in a heartbeat. Adding on administration costs, time spent building wooden formwork, and the wastage levels, it's no wonder that the industry has embraced plastic formwork with open arms. Plastic formwork systems are made using top-grade plastic waste material. This gives a dual advantage of waste utilisation, as well as ensuring there are no harmful chemical reactions.



 [info@plasticconcreteformwork.com](mailto:info@plasticconcreteformwork.com)

 [www.plasticconcreteformwork.com](http://www.plasticconcreteformwork.com)

 0498 202 445

# Reusable Plastic Formwork Sheets

- No more big or little splinters
- No harmful glues and chemicals used
- Eliminates wood dust and or inhalation of harmful timber dusts
- No irritation of the skin, nose, throat or eyes
- No smelly or harmful odours
- Not flammable any anyway




## On Site Benefits of our Reusable Plastic Formwork Sheets



- Re-usable - up to 100 times massively reducing cost per use
- Does not require form oil as the smooth surface does not stick to the concrete
- Less transport of plywood to and from site
- Easily cleaned with a simple pressure washer on site or in the yard
- Easily cut using circular saws similar to plywood
- Shiny surface to finish off concrete surfaces very well
- Less waste on site due to the amount of reuses



 [info@plasticconcreteformwork.com](mailto:info@plasticconcreteformwork.com)

 [www.plasticconcreteformwork.com](http://www.plasticconcreteformwork.com)

 0498 202 445

# Environmental Benefits of our Reusable Plastic Formwork Sheets

- Reduced carbon footprint due to less transport required for the project
- A Less waste during the project due to the amount of reuses each sheet has
- A Removal of harmful chemicals ending up in incinerators or landfill
- A Fully Recyclable at the end of its life
- A Does not require form oil as the smooth surface does not stick to the concrete






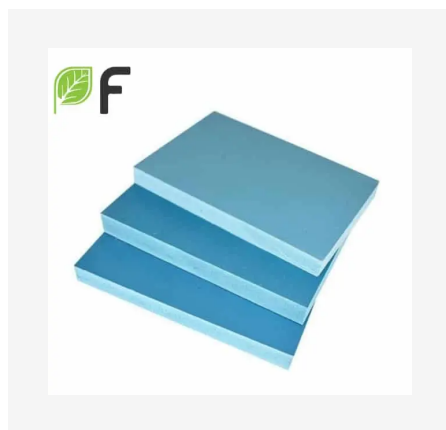
# Business Benefits of our Reusable Plastic Formwork Sheets



- Re-usable - up to 100 times massively reducing cost per use
- Retrieving data. Wait a few seconds and try to cut or copy again
- Retrieving data. Wait a few seconds and try to cut or copy again
- Reduction in form oil costs
- Reduction in transport costs per job
- Improves cash flow for each job with less purchasing required at project kick off



 [info@plasticconcreteformwork.com](mailto:info@plasticconcreteformwork.com)  
 [www.plasticconcreteformwork.com](http://www.plasticconcreteformwork.com)  
 0498 202 445



## Our plastic formwork for sale comes in the following thicknesses.


- Our plastic formwork sheets can be cut to suit any sizes.
- Thickness ranges from 9mm - 25mm.
- The sheets can be customised to suit any formwork panel systems on the market.
- Please get in contact with use to find out more.

Length	Width	Thickness	Sheets Per Pack	M2 Per Pack	Kg Per Sheets	Kg Per Pack
2400	1200	17mm	50	144	36	1800
1800	1200	17mm	50	108	26	1300
2400	1200	10mm	50	144	23	1155
1800	1200	10mm	50	108	18	870



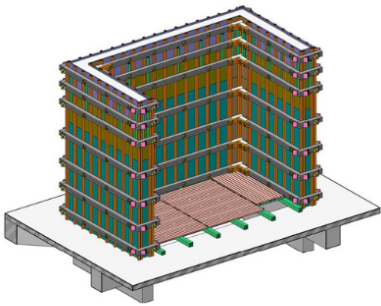
 [info@plasticconcreteformwork.com](mailto:info@plasticconcreteformwork.com)

 [www.plasticconcreteformwork.com](http://www.plasticconcreteformwork.com)

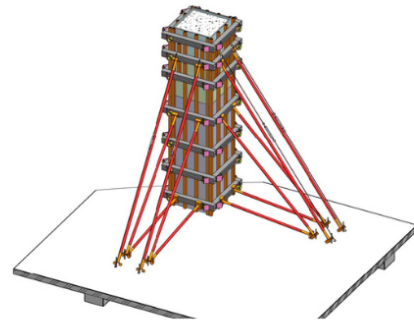
 0498 202 445

# Different Uses of our Plastic Formwork Sheeting

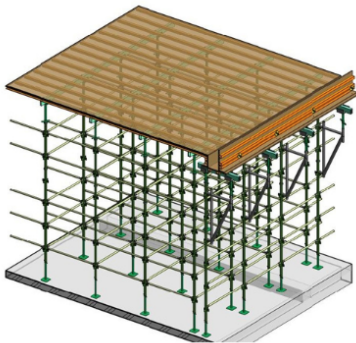
Plastic formwork is a low maintenance, cost-effective, and environment-friendly alternative to the other formworks. As such, it is utilised in various ways as detailed below.



Plastic Formwork for Walls



Plastic Formwork for Columns




Plastic Formwork for Floors




Pastic Formwork for Concrete Slabs



 [info@plasticconcreteformwork.com](mailto:info@plasticconcreteformwork.com)

 [www.plasticconcreteformwork.com](http://www.plasticconcreteformwork.com)

 0498 202 445





# Frequently Asked Questions

## What sizes do they come in?

2400 x 1200 x 17mm (2.88m<sup>2</sup>) or 1800 x 1200 x 17mm (2.16m<sup>2</sup>). Can be custom made into different length, widths and thickness. Also can be made to suit formwork panels systems

## Whats the class finish does it achieve?

The sheet surfaces are smooth and shiny finish like glass so the sheets can be used up to class 2 finishes. Possibly class 1 in certain circumstances.

## What happens if left out in the weather?

The sheets will fade slightly however they do not absorb water, warp, rot or degrade over time.

## What happens with drop stripping everything?

Dropping stripping is fine but not recommended as per our handling guidelines. The sheets are flexible and unlikely to break.

## What is the weight of sheets?

Each 2400 x 1200 x 17mm sheet weights 36kg, each 1800 x 1200 x 17mm sheet weights 26kg.

## How durable are they?

Very durable and long lasting – the sheets can used 50 plus times of handled and stored correctly. Small holes in the sheets can be repaired using silicone as well.

## Do they break if you nail them?

No they don't – please see this video of them being nailed.

## How many uses can I get out of the sheets?

50 times plus depending on how the sheets are treated on site.

## What about the slippage on it?

We are currently doing slip testing for the sheets and we can share the results with you shortly.



info@plasticconcreteformwork.com



www.plasticconcreteformwork.com



0498 202 445